

CLASS : P.7 SET SIX.
SUBJECT : INTEGRATED SCIENCE
DURATION : 2 HOURS 15 MINUTES

Index No.

--	--	--	--	--	--	--	--	--

Name: _____...Stream: _____

DO NOT OPEN THIS BOOKLET UNTIL YOU ARE TOLD TO DO SO

Read the following instructions carefully.

1. This paper is made up of two Sections:
A and B.
2. Answers to both sections must be written in the spaces provided in full sentences.
3. Section A has 40 questions (40 marks)
4. Section B has 15 questions (60 marks)
5. Attempt all questions. All answers to both sections A and B must be written in the spaces provided.
6. All answers must be written in blue or black ballpoint pen or ink but not in pencil. All work done in pencil, except diagrams, will **NOT** be marked.
7. Crossing out of answers will lead to loss of marks.
8. Any handwriting that cannot be easily read may lead to loss of marks.

FOR EXAMINERS USE ONLY		
QN. NO.	MARK	SIGN
1 - 10		
11 - 20		
21 - 30		
31 - 40		
41 - 43		
44 - 46		
47 - 49		
50 - 52		
53 - 55		
TOTAL		

SECTION A : (40 MARKS)

1. Name any one form of energy produced by burning charcoal.

2. How is a fish similar to a tadpole in their way of breathing?

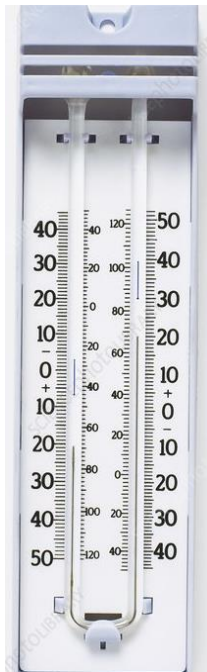
3. Give one example of involuntary muscles in the body.

4. Why is carbon dioxide used in the preservation of soft drinks?

5. Write any one method of making magnets.

6. Why do school children soak clothes before washing them?

The diagram below shows a weather instrument. Use it to answer questions 7 and 8.



7. Identify the weather instrument shown above.

8. How is the above instrument useful at a weather station?

9. Give any one importance of the hair found on your head.

10. Write one way freezing is important to people.

11. Why do doctors advise sick people to take plenty of foods rich in proteins?

12. Give any one industrial use of water.

The diagram below is a seed. Use it to answer question 13.



13. How is the seed above dispersed?

14. How are kidneys useful in the human body?

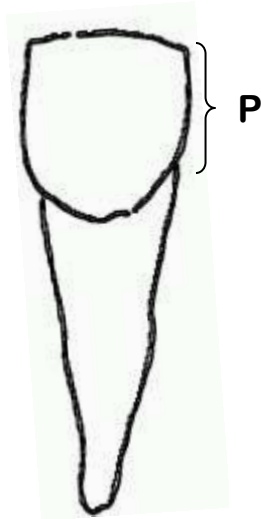
15. Write any one domestic animal used as an energy resource.

16. Why do we plough land before planting crops?

17. Write any one way you can prevent tape worm infestation.

18. Why are hutches normally raised from the ground?

The diagram below shows a tooth. Use it to answer questions 19 and 20.



19. Identify the type of tooth shown above.

20. Give one way you can make part marked **P** stronger.

21. How is a beak useful to a hen during incubation?

22. Why is it advisable to cook food from raised places?

23. Convert 10°C to $^{\circ}\text{F}$.

24. Give one way parents promote immunisation in a community.

25. Write one difference between physical changes and chemical changes.

26. Give one way you can protect yourself against bee stings when harvesting honey.

27. State the role of houseflies in the 4Fs germ path.

28. What are leguminous plants?

29. Why do farmers castrate their male calves?

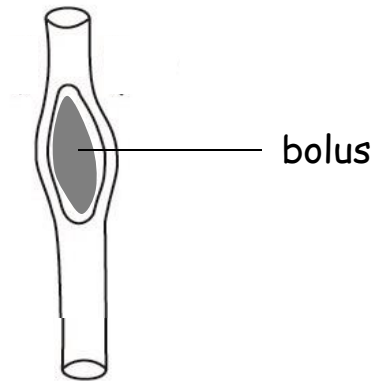
30. What is the importance of including roughages in our diet?

31. Give one activity you can do to keep your lungs in good health conditions.

32. Write one similarity between a snail and a slug.

33. State any one characteristic of sand soil.

The diagram below shows part of the alimentary canal. Use it to answer questions 34 and 35.



34. Name the part of the alimentary canal shown above.

35. How does the food bolus move through the part shown above?

36. State any one life skill that can safeguard you from smoking.

37. Write any one material a mango tree uses to make starch.

38. Give any one effect of heat on a piece of metal.

39. Why is a sugarcane plant not grouped under stem tubers?

40. Write one activity you can do to promote sanitation in the bedroom.

SECTION B (60 MARKS)

41. (a) Give any **one** source of food.

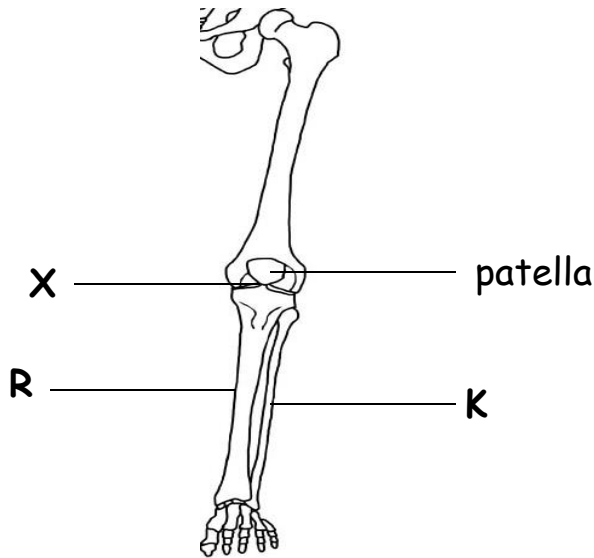
(b) How is food useful to the human body?

(c) Write **two** ways of preventing food contamination?

(i) _____

(ii) _____

42. The diagram below shows bones in the leg. Use it to answer question 42.



(a) Name the bones marked **R** and **K**.

(i) **R** _____

(ii) **K** _____

(b) Give **one** way friction is reduced at joint marked **X**.

(c) How is the joint at **X** similar to that at the elbow?

43. (a) Give any two PIASCY messages.

(i) _____

(ii) _____

(b) How are PIASCY messages important to primary school children?

(c) How can PIASCY messages be passed on to children at school?

44. (a) What happens to the following when water is frozen?

(i) its volume

(ii) its mass

(b) Why does oil float on water?

(c) If the density of a sweet potato is 3gms/cc and its volume is 10cc.

Calculate its mass.

45. (a) State two advantages of breast feeding a baby.

(i) _____

(ii) _____

(b) How can breast feeding mothers increase the amount of breast milk they produce?

(c) Mention one condition when bottle feeding is recommended.

46. (a) How are the following crops propagated?

(i) sweet potatoes

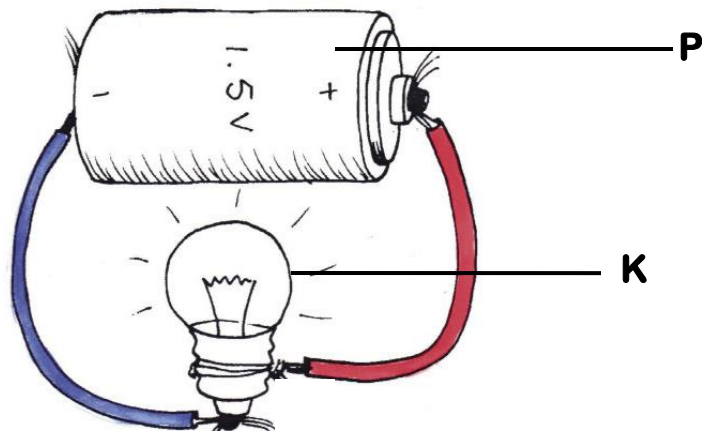
(ii) millet

(b) State any two advantages of growing crops in rows.

(i) _____

(ii) _____

47. The diagram below shows a simple electric circuit. Use it to answer question 47.



(a) Give the use of part marked K.

(b) Write the energy change that occurs in part P when the circuit is complete.

(c) Which type of current electricity is produced by part marked P?

(d) Use an arrow to show the flow of electric current.

48. (a) Why is wind grouped under renewable resources?

(b) Write **two** ways people use wind as a resource.

(i) _____

(ii) _____

(c) Give **one** way people manage dangers of wind at home.

49. (a) Name the type of cattle reared for milk production.

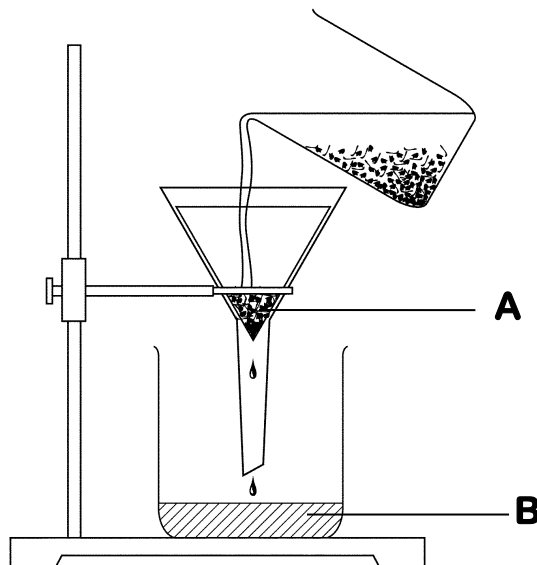
(b) How can a farmer improve milk production on a cattle farm?

(c) Give **two** activities a farmer can do to get clean milk from a cow.

(i) _____

(ii) _____

50. The diagram below shows a method of separating mixtures. Use it to answer question 50.



(a) What name is given to the substances marked **A** and **B**?

(i) **A** _____ (ii) **B** _____

(b) Identify the method of separating mixtures shown above.

(c) Mention one mixture that can be separated using the method shown above.

51. (a) Name any one common vector that spreads germs by biting people.

(b) Give one other way vectors spread germs.

(c) Write any two ways of controlling insect vectors in our houses.

(i) _____

(ii) _____

52. (a) Which blood cell is responsible for ;

(i) clotting blood?

(ii) transporting oxygen?

(b) Name any one place in the human body where blood cells are made.

(c) Give one difference between white blood cells and red blood cells.

53. (a) Who is a first aider?

(b) Write one good quality of a good first aider.

(c) Why do we pour cold clean water on a burnt part of the body?

(d) Give the purpose of making an alarm when a friend has fallen in a pit.

54. (a) Besides free range system, give one other system of rearing poultry.

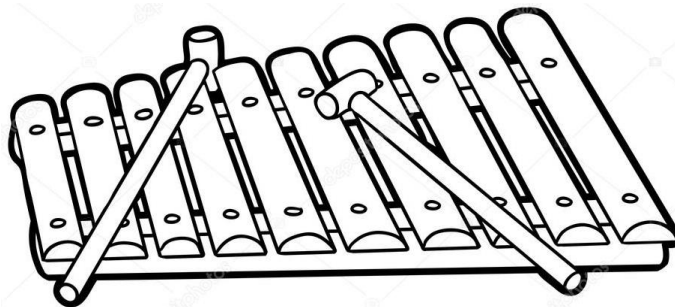
(b) Write two advantages of using free range system to rear birds.

(i) _____

(ii) _____

(c) Why is it dangerous to use free range system near a forest?

55. The diagram below shows a music instrument. Use it to answer question 55.



(a) Identify the instrument shown above.

(b) How does the above instrument produce sound?

(c) To which group of music instrument does it belong?

(d) How can sound produced by the above instrument be stored?