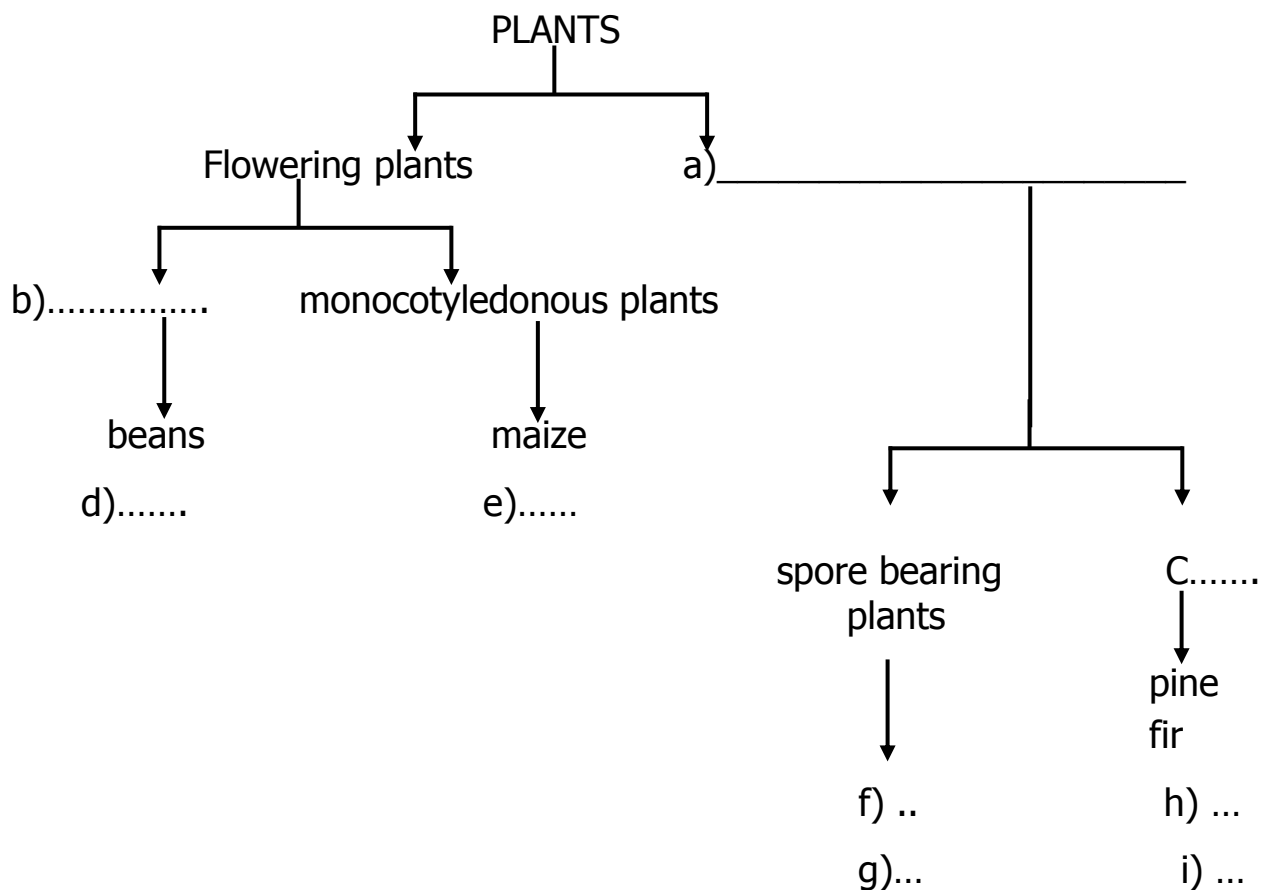


TUESDAY 31ST MARCH 2020

SCIENCE LESSON SIX

1. Why are plants green?
2. How do plants feed?
3. What is the main difference between plants and animals?
4. ***The illustration below is about classification of plants. Study it carefully and compete it correctly.***



- | | | |
|--------|-------|---------|
| i. a | iv. d | vii. g |
| ii. b | v. e | viii. h |
| iii. c | vi. f | ix. i |

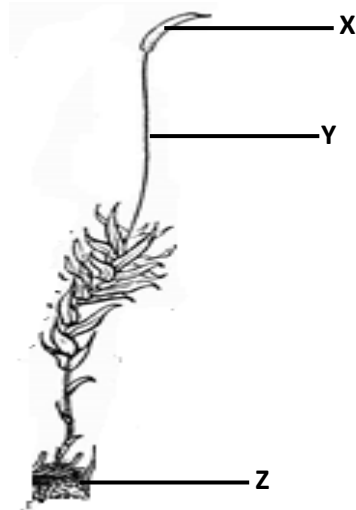
5. Use either monocotyledonous plants or dicotyledonous to complete the sentences below.

a) They have taproot system_____

- b) They have fibrous root system _____
- c) They have parallel leaf venation _____
- d) They have network leaf venation _____
- e) They undergo epigeal germination _____
- f) They undergo hypogeal germination _____

6. How are coniferous plants similar to beans in terms of reproduction?
7. How are coniferous plants different from beans?
8. What do we call structures in which seeds conifers are found?
9. How are mosses plants and mushrooms similar?
10. How are mosses plants different from mushrooms?
11. Why are ferns called plants yet they do not bear flowers?
12. Why are liverworts called non flowering plants?
13. In what kind of environment do ferns grow?
14. Write down any one system of a flowering plant.

15. Use the diagram below to answer questions that follow.



- a) Name the plant drawn above.
- b) Name the parts marked with letters
 - i. x
 - ii. y
 - iii. z
- c) State the importance of parts marked x and z

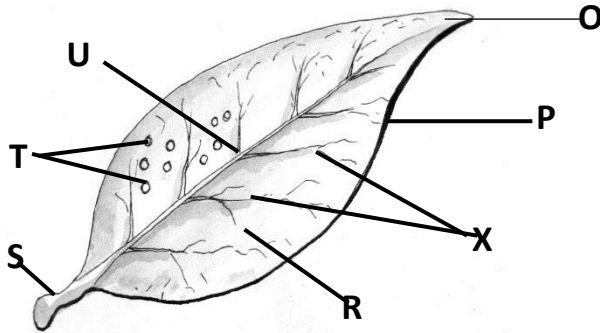
d) How does the plant in the diagram above reproduce?

16. What enables fruits to ripen?

17. What name is given to plant hormones which enable them to grow?

18. What do we call the dominant bud on a plant?

19. The diagram below is of a leaf. Study it carefully and use it to answer questions that follow.



a) Name the parts marked

- | | | |
|--------|-------|--------|
| i. O | iv. S | vii. X |
| ii. P | v. T | |
| iii. R | vi. U | |

b) Which part of a feather is compared with each of the following parts?

T _____ S _____

c) State the importance of parts marked with letters

- i) S
- ii) T
- iii) X
- iv) R

d) Name the part of each of the living things below that has a similar function as part T.

- | | |
|----------------------|---------------------|
| i) Fish _____ | v) Earthworms _____ |
| ii) Insects _____ | vi) Frogs _____ |
| iii) Arachnids _____ | vii) Mammals..... |
| iv) Tadpoles _____ | |

20. a) Mention two important processes that take place in leaves of plants.

b) Why don't plants give off carbon dioxide they produce during the day?

20. a) Define leaf venation.

b) Name the type of leaf venation shown in each of the diagram below.



c) Give one example of a plant with the type o leaf venation as shown in

i. A _____

ii. B _____

End

STAY HOME, STAY SAFE

